



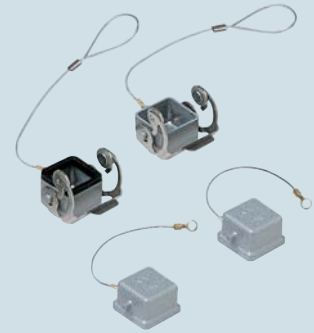
inserts:		page
<b>CK</b> .....	3 poles + ⊕	36
<b>CK</b> .....	4 poles + ⊕	36
<b>CKS</b> .....	3 poles + ⊕	37
<b>CKS</b> .....	4 poles + ⊕	37
<b>CD</b> .....	8 poles	40
<b>CQ</b> .....	5 poles + ⊕	63
<b>CQ</b> .....	12 poles + ⊕	62

overall dimensions:  
21 x 21 mm

**hoods**



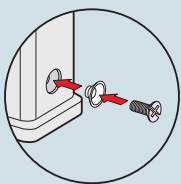
**covers**



description	part No. (entry - Pg 11)	part No. (entry - M 20)	part No.
with pegs, top entry <sup>1)</sup> with pegs, side entry <sup>1)</sup>	<b>CKA 03 VS</b> <b>CKA 03 VAS</b>	<b>MKA V20</b> <b>MKA VA20</b>	
with lever in galvanised steel, top entry <sup>1)</sup> with stainless steel lever, top entry <sup>1)</sup>	<b>CKA 03 VGS</b> <b>CKAX 03 VGS</b>	<b>MKA VG20</b> <b>MKAX VG20</b>	
with pegs and gasket, for female inserts with pegs, for male inserts			<b>CKA 03 C <sup>2)</sup></b> <b>CKA 03 CA <sup>2)</sup></b>
with stainless steel lever and gasket, for female inserts with stainless steel lever, for male inserts			<b>CKAX 03 CX</b> <b>CKAX 03 CXA</b>
seal and screw kit for IP66/IP67 <sup>3)</sup> for CK, CQ 05, CKS inserts	<b>CKR 65</b>		
seal and screw kit for IP66/IP67 <sup>3)</sup> for CD 08 inserts	<b>CKR 65 D</b>		

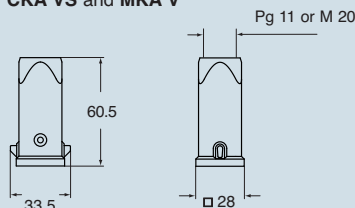
- 1) enclosures with IP44 degree of protection.
- 2) better to use with CKAX enclosures (stainless steel lever).
- 3) To achieve the IP66/PI67 protection rating, a kit is available which includes a seal to be fitted under the insert fastening screw supplied with the kit (see example illustrated), instead of the screw with spring washer supplied with the insert

**Note:**  
The CQ 12 inserts are already fitted with seal and screw, allowing IP66/IP67 protection rating to be achieved.

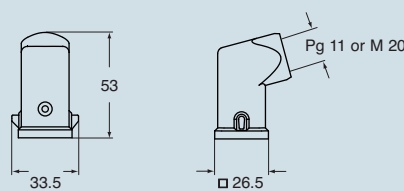


dimensions in mm

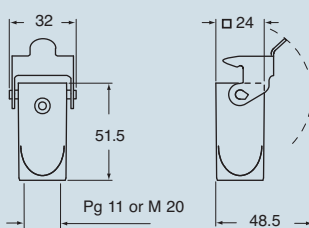
**CKA VS and MKA V**



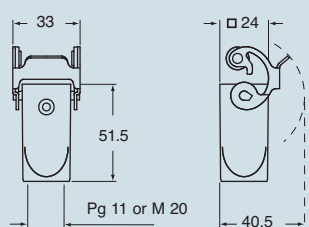
**CKA VAS and MKA VA**



**CKA VGS and MKA VG**

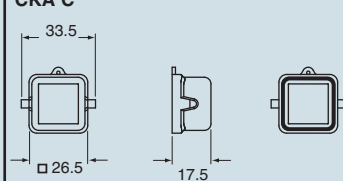


**CKAX VGS and MKAX VG**

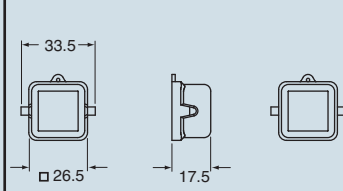


dimensions in mm

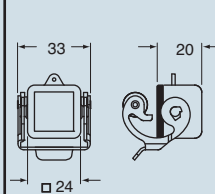
**CKA C**



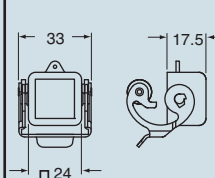
**CKA CA**



**CKAX CX**



**CKAX CXA**



**ILME**®  
Type 12  
Type 4/4X only  
with CKR 65 (D)

dimensions shown are not binding  
and may be changed without notice

size 21.21